



**STRAND  
THEATRE**  
ROCKLAND MAINE

**Film Tickets: \$7/STRAND Members,**

\$8/Seniors, Students, Matinees, \$9/ Adults

Purchase movie tickets at our box office 30 minutes prior to each showtime.

**Tickets for live events** and other select shows may be purchased in advance

online at [RocklandStrand.com](http://RocklandStrand.com); at the box office when the theater

is open for shows; or by phone - 207-594-0070

(office hours are Tue, Thu and Fri from 2:30-4:30pm;  
we will return messages left outside of those hours)

# August

<b>August</b>					<b>THU 1</b> <b>FILM:</b> THE WIDOW CLICQUOT 1:00 <b>FILM:</b> FLIPSIDE 7:00	<b>FRI 2</b> <b>FILM:</b> KINDS OF KINDNESS 4:30 8:00	<b>SAT 3</b> <b>FILM:</b> CAT VIDEO FEST 2024 5:30 <b>FILM:</b> KINDS OF KINDNESS 8:00
					<b>SUN 4</b> <b>FILM:</b> CAT VIDEO FEST 2024 3:00 <b>FILM:</b> SAVING WALDEN'S WORLD 5:30	<b>MON 5</b> <b>CLOSED</b>	<b>TUE 6</b> <b>FILM:</b> KINDS OF KINDNESS 1:00 7:00
<b>SUN 11</b> <b>LIVE:</b> Sunshine Series SHINDAIKO at Safe Harbor Gazebo 1:00 <b>FILM:</b> TOUCH 3:00, 5:30	<b>MON 12</b> <b>CLOSED</b>	<b>TUE 13</b> <b>EXHIBITION ON SCREEN:</b> MY NATIONAL GALLERY 2:00 7:00	<b>WED 14</b> <b>FILM:</b> TOUCH 7:00	<b>THU 15</b> <b>LIVE:</b> SALT BAY CHAMBERFEST: Jennifer Koh 5:00	<b>FRI 16</b> <b>FILM:</b> KNEECAP 5:30 8:00	<b>SAT 17</b> <b>FILM:</b> KNEECAP 5:30 8:00	
<b>SUN 18</b> <b>FILM:</b> Criterion Series: WES ANDERSEN DOUBLE FEATURE THE ROYAL TENENBAUMS (2001) 2:00 <b>FILM:</b> THE GRAND BUDAPEST HOTEL (2014) 4:30	<b>MON 19</b> <b>MEMBER MOVIE:</b> MRS HENDERSON PRESENTS (2005) 5:30	<b>TUE 20</b> <b>FILM:</b> KNEECAP 1:00 7:00	<b>WED 21</b> <b>FILM:</b> KNEECAP 7:00	<b>THU 22</b> <b>FILM:</b> KNEECAP 1:00 <b>FILM:</b> Jubilee Series 30th Anniversary FORREST GUMP (1994) 7:00	<b>FRI 23</b> <b>FILM:</b> BETWEEN THE TEMPLES 5:30 8:00	<b>SAT 24</b> <b>FILM:</b> BETWEEN THE TEMPLES 5:30 8:00	
<b>SUN 25</b> <b>FILM:</b> BETWEEN THE TEMPLES 3:00, 5:30 <b>LOCAL:</b> STRAND ON THE AIR 5:00 Broadcast on WRFR	<b>MON 26</b> <b>CLOSED</b>	<b>TUE 27</b> <b>FILM:</b> BETWEEN THE TEMPLES 1:00 7:00	<b>WED 28</b> <b>FILM:</b> BETWEEN THE TEMPLES 7:00	<b>THU 29</b> <b>LIVE:</b> Sunshine Series ANTS ON A LOG at Safe Harbor Gazebo 10:30am <b>FILM:</b> BETWEEN THE TEMPLES 1:00, 7:00	<b>FRI 30</b> <b>FILM:</b> TBD 5:30 8:00	<b>SAT 31</b> <b>FILM:</b> Family Matinee E.T. the Extra- Terrestrial(1982) 3:00 <b>FILM:</b> TBD 5:30, 8:00	

SCREEN



July 26 - August 1



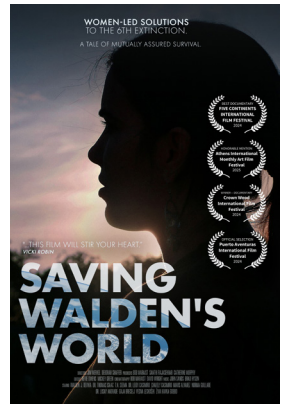
July 30 - August 1



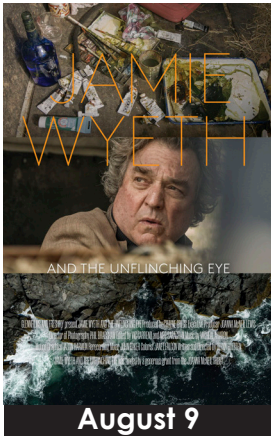
August 2-7



August 3 & 4



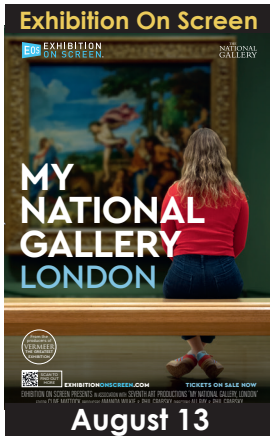
August 4



August 9



August 9-14



August 13



August 16-22



August 18



August 19 at 5:30pm



August 22 at 7pm



August 23-29



August 31 at 3 pm

The Strand Theatre has closed captioning and visual-impairment assist technology in the auditorium to allow patrons that are deaf, hard of hearing, blind or have low vision, an opportunity to experience a wide array of film events presented at the Strand. Available in the lobby.

Live event and select show tickets: Purchase in advance online at [RocklandStrand.com](http://RocklandStrand.com); at the box office when the theater is open for shows; by phone - 207-594-0070 (office hours are Tue, Thu and Fri from 2:30-4:30pm; we will return messages left outside of those hours)

LIVE



Sunshine Series SHINDAIKO AT THE SAFE HARBOR GAZEBO 60 OCEAN ST. ROCKLAND August 11



Sunshine Series ANTS ON A LOG AT THE SAFE HARBOR GAZEBO 60 OCEAN ST. ROCKLAND August 29



PAULA POUNDSTONE HEARD ON NPR'S WAIT, WAIT...DON'T TELL ME September 7



GENTLEMANBRAWLERS JOIN US FOR AFROFUNK AND INDIE DANCE GROOVES! September 21

Sunshine Series Sponsors



CONCERT SERIES SPONSORS First National Bank First National Bank