



ctober







STRAND
THEATRE

The theater has closed captioning and visual-impairment assist technology in the auditorium to allow patrons that are deaf, hard of hearing, blind or have low vision, an opportunity to experience a wide array of film events presented at the Strand. - Available in the lobby -

Film Tickets:

\$7/STRAND Members,
\$8/Seniors, Students, Matinees
\$10/Adults

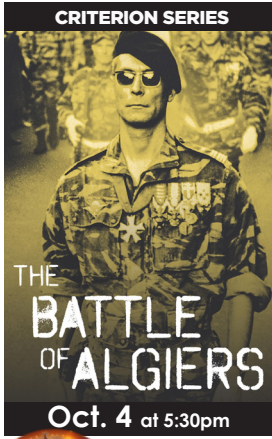
Purchase movie tickets at our box office
30 minutes prior to each showtime.

<p>Film Tickets: \$7/STRAND Members, \$8/Seniors, Students, Matinees \$10/Adults Purchase movie tickets at our box office 30 minutes prior to each showtime.</p>		<p>TUE 1 FILM: DIDI 1:00 7:00</p>	<p>WED 2 FILM: DIDI 7:00</p>	<p>THU 3 NT LIVE: FRANKENSTEIN 1:00 5:30</p>	<p>FRI 4 FILM: <i>CRITERION SERIES</i> THE BATTLE OF ALGIERS (1966) 35mm! a <i>Filmmaker's Pick</i> film introduced by Director Todd Field! 5:30</p>	<p>SAT 5 MET LIVE: LES CONTES D'HOFFMANN 1:00 FILM: THE OUTRUN 6:00, 8:00</p>
<p>SUN 6 FILM: THE OUTRUN 3:00 5:30</p>	<p>MON 7 CLOSED</p>	<p>TUE 8 FILM: THE OUTRUN 1:00 7:00</p>	<p>WED 9 FILM: THE OUTRUN</p>	<p>THU 10 FILM: THE OUTRUN 1:00 7:00</p>	<p>FRI 11 FILM: THE OUTRUN 5:30, 8:00</p>	<p>SAT 12 LIVE: JAKE BLOUNT & MALI OBOMSAWIN 7:30</p>
<p>SUN 13 FILM: LEE 3:00 5:30</p>	<p>MON 14 CLOSED</p>	<p>TUE 15 MET ENCORE: LES CONTES D'HOFFMANN 1:00 FILM: LEE 7:00</p>	<p>WED 16 FILM: LEE 7:00</p>	<p>THU 17 FILM: LEE 1:00 7:00</p>	<p>FRI 18 LIVE: <i>FAMILY SERIES</i> ROMEO & JULIET performed by THEATER AT MONMOUTH 6:30</p>	<p>SAT 19 MET LIVE: GROUNDED 1:00 FILM: LEE 5:30, 8:00</p>
<p>SUN 20 CLOSED: NEW PROJECTOR INSTALLATION </p>	<p>MON 21 CLOSED: NEW PROJECTOR INSTALLATION </p>	<p>TUE 22 CLOSED: NEW PROJECTOR INSTALLATION </p>	<p>WED 23 FILM: THE APPRENTICE 7:00</p>	<p>THU 24 FILM: THE APPRENTICE 1:00 7:00</p>	<p>FRI 25 FILM: THE APPRENTICE 5:30 8:00</p>	<p>SAT 26 FILM: THE APPRENTICE 5:30 8:00</p>
<p>SUN 27 FILM: <i>FAMILY MATINEE</i> HOCUS POCUS (1993) 1:00 FILM: THE APPRENTICE 3:00, 5:30</p>	<p>MON 28 CLOSED</p>	<p>TUE 29 MET ENCORE: GROUNDED 1:00 FILM: HOCUS POCUS (1993) 7:00</p>	<p>WED 30 FILM: <i>JUBILEE SERIES</i> NIGHTMARE ON ELM STREET (1984) 7:00</p>	<p>THU 31 FILM: PHANTOM OF THE OPERA (1925) 1:00 LOCAL: GHOST STORY SLAM 6:00 FILM: Dario Argento's OPERA (1987) 8:00</p>		

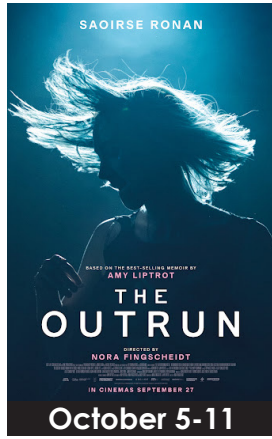


Best Concert
Venue 2024

SCREEN



A 35mm Screening!
a *Filmmaker's Pick* film introduced by Director Todd Field!



Happy Halloween! OCT. 27-31

Family Matinee (1993)
Oct. 27 at 1pm

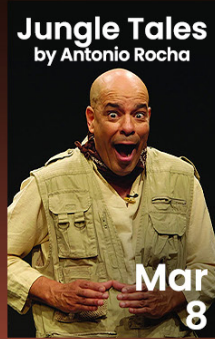
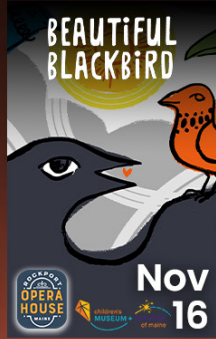
Wine & Popcorn Special!
Oct. 29 at 7pm

Oct. 30 at 7pm

October 31!



Strand Family Series 2024-25



The Strand Family Series is presented with sliding scale tickets \$0-20, a structure that promotes inclusivity and community connection to the arts.

Family Series Sponsors: ROCKLAND HARBOR HOTEL, OUT moine, LIFTING UP MAINE'S QUEEN YOUTH, nefa

Tickets on sale now at RocklandStrand.com



JAKE BLOUNT & MALI OBOMSAWIN
October 12



OKAN CANCELED
October 26



AYSANABEE
November 8

Tickets for live events and other select shows may be purchased these ways:

- Online at RocklandStrand.com
- At our walk-up box office during every show, plus on Tue. & Thu. from 12-4:30pm, and Wed. & Fri. from 3-5:30pm.
- On our phone line (207-594-0070) on Tue. & Thu. from 12-4:30pm, and Wed. & Fri. from 3-5:30pm.

(We will return messages left outside of those hours)

CONCERT SERIES SPONSORS

